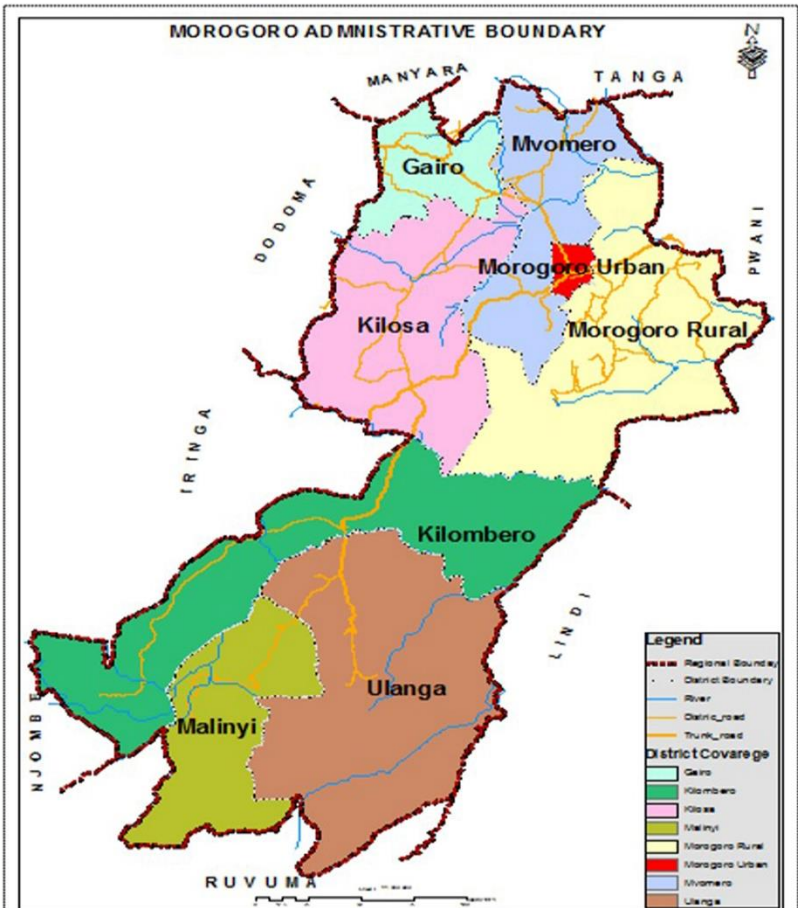
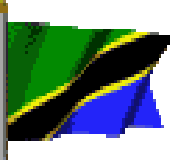




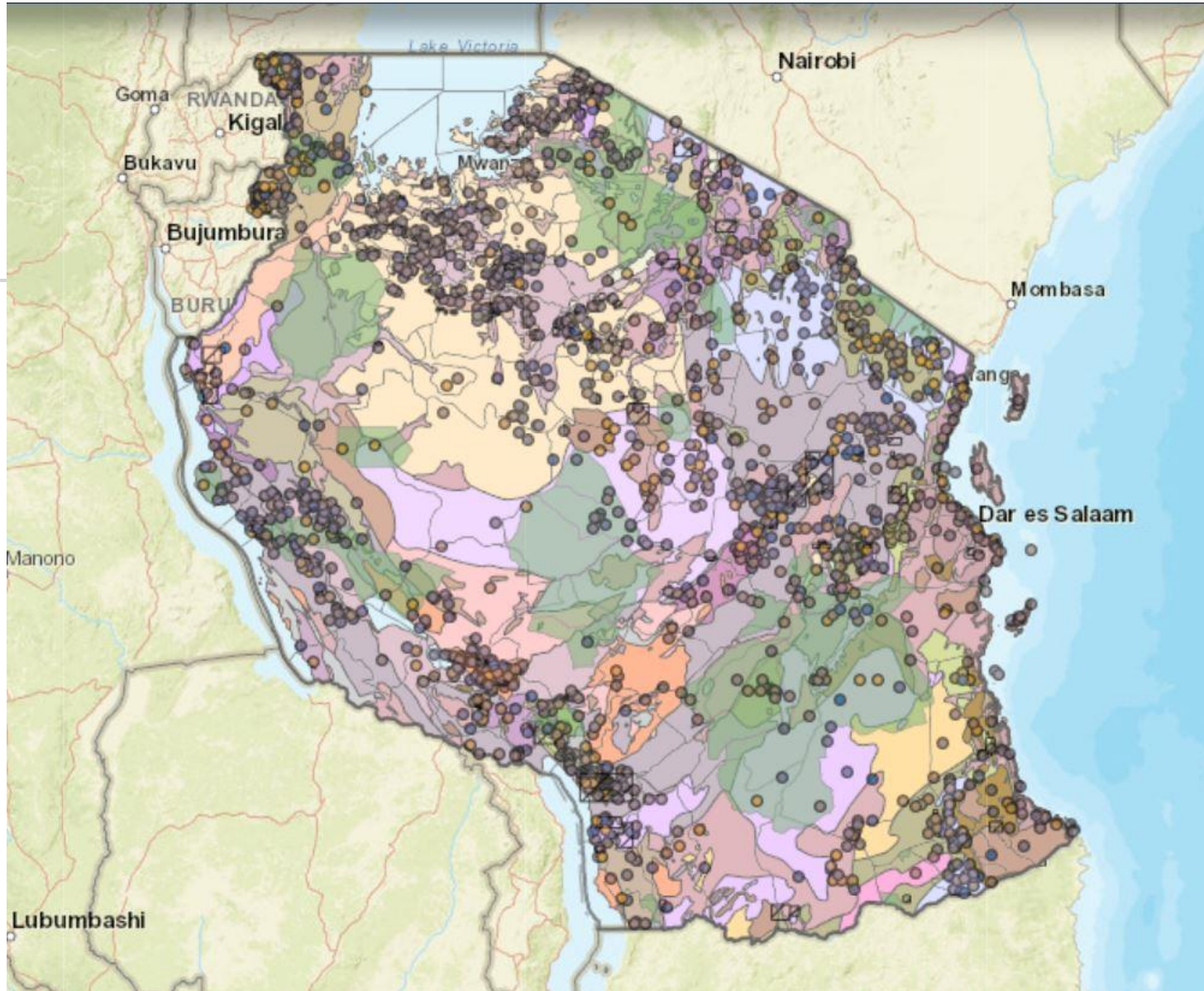
MINERALS INVESTMENT OPPORTUNITIES IN MOROGORO REGION



Morogoro Region is among the 26 Regions in Tanzania Mainland, situated in eastern Tanzania about 200 Km from Dar es Salaam. The region has 7 administrative districts namely Malinyi, Ulanga, Kilombero, Kilosa, Gairo, Mvomero and Morogoro, and therefore occupies an area of 73,139 Square Kilometer which is 7.7% of the Country

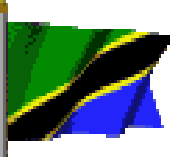


MINERAL ENDOWMENT IN TANZANIA





MINERAL ENDOWMENT IN TANZANIA





MINERAL ENDOWMENT IN MOROGORO

Morogoro is among the regions in Tanzania which are endowed with geology which is highly prospective for precious metals, gemstones, industrial minerals and building materials.

Some of Minerals occurring in Morogoro are:-

No.	District	Minerals
1	KILOSA	Kyanite, Gold, Feldspar, Ruby, Copper, Iron Ore, Mica, BM, Quartz, Moonstone, Sunstone, Corundum, Amethyst, REE, Rhodolite
2	KILOMBERO	Gold, Morum, Aggregate, Garnets, Sand
3	MOROGORO	Graphite, Ruby, Spinel, Mica, Dimension Stones, REE, Gold, Rhodolite, Tourmaline, Sapphire, Feldspar, Urani, Quartz, Mica
4	MVOMERO	Kaolin, Magnesite, Iron Ore, Copper, Gold, Feldspar, Aquamarine, Mica, Garnet, BM, Quartz, Corundum, Amethyst, Urani
5	ULANGA	Ruby, Spinel, Graphite, Gold, Mica, Marble, Sand, aggregates
6	GAIRO	Quartz, Garnets, Rhodolite, Feldspar, Gold, Sunstone, Iron Ore, Copper, Corundum
7	MALINYI	Ruby, Spinel, Graphite, Gold, Mica, Sand, Aggregates



INVESTMENT OPPORTUNITIES IN MOROGORO



- ❑ Exploration projects from grassroots to detail stages;
- ❑ Mining projects;



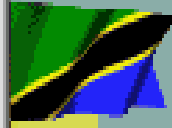
INVESTMENT OPPORTUNITIES IN MOROGORO



- ❑ Establishment of gemstone value addition activities (cutting, polishing and jewellery);
- ❑ Establishment of mineral beneficiation activities (smelters and refinery for metallic minerals);



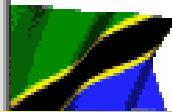
INVESTMENT OPPORTUNITIES IN MOROGORO



- ❑ Provision of mining operational services (drilling, blasting, equipment hiring and mining support services);
- ❑ Provide transport service for industrial minerals and semi gems
- ❑ Provide chemicals used in extraction of metallic minerals



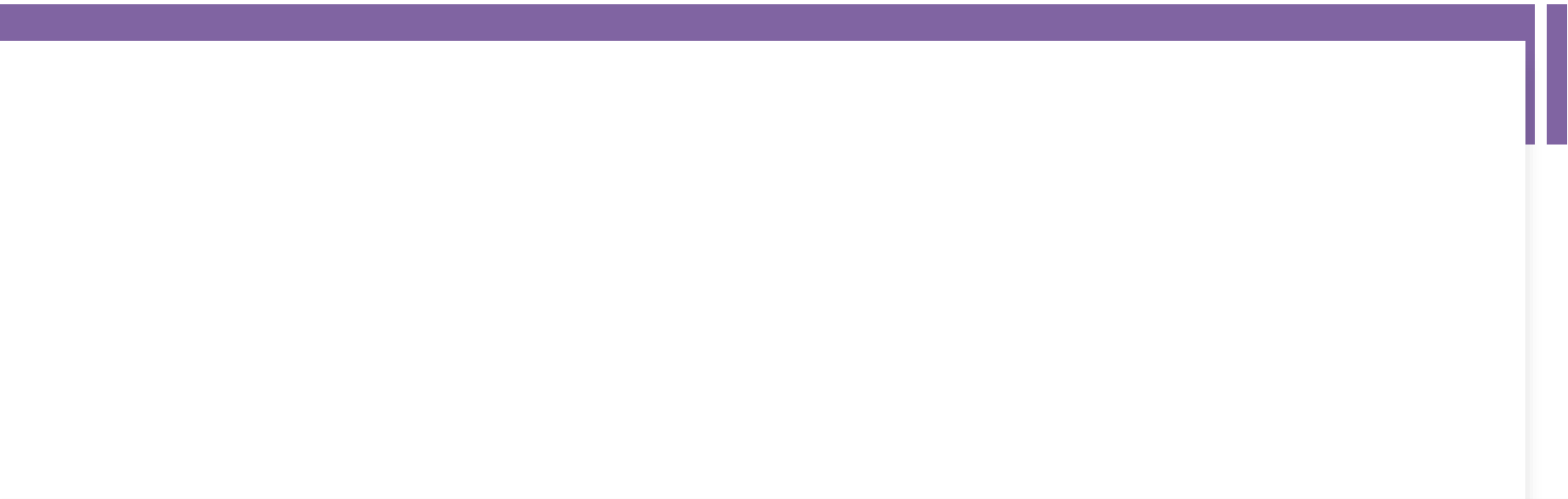
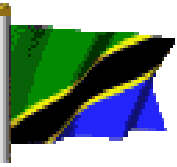
INVESTMENT OPPORTUNITIES IN MOROGORO



- ❑ Establishment of factories for utilization of industrial minerals and manufacturing of related products like gypsum boards, cements, tiles, aggregates, fertilizers, glass, papers, pencils, iron steel and paints;
- ❑ Invest in dimension stones value addition



INVESTMENT OPPORTUNITIES IN MOROGORO



- Collaborate with Tanzanians to provide social services to the mining companies;
- Invest in minerals trading (Dealers);
- Provide financial and technical support for small scale miners



MINERAL SECTOR GOVERNANCE FRAMEWORK



Types of Mineral Rights under the Mining Act, 2010.

i. Division A

Prospecting License (PL) - granted for a period of 4 years; renewable twice 1st renewal – 3 years, 2nd renewal – 2 years

ii. Division B

❖ Special Mining Licence (SML)

Granted for large scale mining operations whose capital investment is not less than USD 100 million.

❖ Mining Licence (ML)

Granted for medium scale mining operations whose capital investment is between USD 5 M and USD 100 million.

iii. Division C

Primary Mining Licence (PML)- Granted for small scale mining characterized by minimal machinery or technology of an initial capital for investment which does not exceed US dollars 5 million or its equivalent in Tanzania Shilling - This issued for Tanzanian only

iv. Division D

Processing licence, Smelting licence and Refining licence

Dealing in Minerals

Dealer Licence - which can be issued to Tanzania citizens and foreigners

Broker Licence - which can be issued to Tanzania citizens only



Guidance and Permitting

Apart from the Ministry of Minerals and her associate organizations/institutes, the following Government ministries, agencies/institutes provide guidance, permits and licenses relevant for investing in the mining industry:-

- ❑ Vice President's Office-Department of Environment - responsible for environment management matters;
- ❑ Tanzania Investment Centre (TIC) - responsible for coordination, promotion and facilitation of investment;
- ❑ Business Registrations and Licensing Agency (BRELA) - responsible for registration of business names, companies and intellectual property rights such as patents of inventions, Industrial designs, trade and service marks



Why to Investments Morogoro?



- ❑ The region is well connected with transport infrastructures to the neighboring regions such Railways (Central Railways, Tanzania Zambia Railways Authority (TAZARA) and SGR);
- ❑ The region is served by ten (10) air strips which are located in Ifakara, Ulanga, Kilosa, Mvomero and Morogoro districts;
- ❑ The region is covered by telecommunication network all over the urban and rural (Tigo, Vodacom, Airtel, Zantel, TTCL);
- ❑ Availability of utilities such Water and Electricity;



Why to Investments Morogoro?



- ❑ Availability of Health facilities all over the region;
- ❑ Availability of local and International Radio's broadcast and TV's stations throughout the region;
- ❑ Morogoro is nearly close to the market (Hub town to the Market) Dar es salaam as a Commercial City and Dodoma which is capital city of Country and connected by tarmac roads and railways;
- ❑ Morogoro is close to the harbors and international airports;
- ❑ Morogoro endowed with potential minerals (Gemstones, Industrial Minerals, Metallic Minerals, and Building Materials)

Thanks

